

VT-MODEM-2 “Self-Dialing” Industrial Modem sends numeric page to Motorola Cell Phone

Abstract: The information in this document was created by SIXNET. It details the configuration for dialing and sending a numeric message to a cell phone using the “Self-Dialing” feature in the VT-MODEM-2. Upon successful completion of the setup, the user will be able to be alerted, via cell phone, with a numeric code transmitted by the VT-MODEM-2. The VT-MODEM-2 will transmit the code when it’s “From PLC” input is energized, which can be controlled by a PLC or another device.

Hardware and software used:

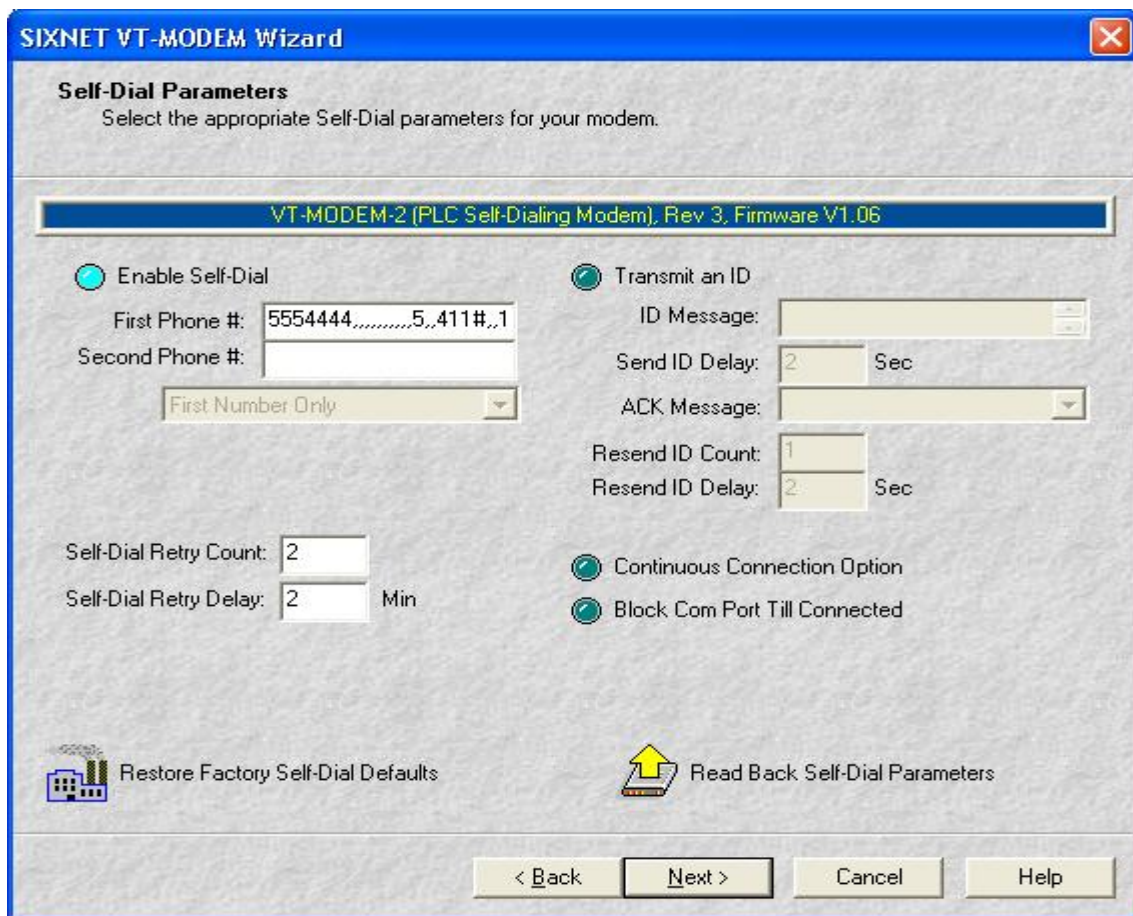
- VT-MODEM Setup Wizard v2.06
- Desktop PC running Windows 98, NT, 2000 or XP
- (1) VT-MODEM-2WW – Self-Dialing industrial modem
- (1) VT-CABLE-MDM – Straight thru VT-MODEM-2 configuration cable
- (1) Motorola cell phone on Cingular network or
- (1) Motorola cell phone on Verizon network or
- (1) Motorola cell phone on Sprint PCS network

Setup Procedure:

- **Manually send message to learn the sending requirements:**
 1. From a land line or another cell phone call the number of the cell phone that will receive the numeric page using a touch tone phone. Make sure the cell phone has a signal when you call it.
 2. When no one answers the call the operator should prompt you for the option to leave a numeric message. Count the number of seconds it takes from when you started the call and the operator prompts you to enter number to start numeric page (Example: 20 seconds).
 3. Take note of the number that the operator prompts you to use to start the numeric page and if there are any numbers or symbols required at the end of the numeric string. For example, the number required to start the numeric page is 5. Then, a pound (#) sign after the number page is entered to indicate the end of the numeric message. Then, a 1 is needed to send the message.
 4. Enter a test numeric page and other digits or symbols required.
 5. Verify that the message was successfully sent.

- **Configuring the VT-MODEM-2:**

1. Use the Modem Set-up Wizard to configure the VT-MODEM-2 (the latest version is on <http://www.sixnetio.com/>).
2. In the Self-dial parameters window highlight the “enable Self-Dial” option.
3. In the “First phone #” field the entire string must be entered.
4. The first part of the string is the phone number which in this example is 555-4444 (See Screen Grab 1).
5. Then, enter the pause recorded earlier in the first section “Manually send message” from the time the call is dialed to the time the operator answers. In a modem dial string, pauses are entered using commas. By default each comma is 2 seconds, so to enter pause of 20 seconds you should use ten commas (See Screen Grab 1).
6. Next, enter the number required to start the numeric message, 5 in this example. Enter in a short delay of 4 seconds (2 commas) followed by the desired numeric message, 411 in this example. Then, enter in a symbol (if required), in this case the # sign, followed by a short delay (2 commas) and 1 to send the message (See screen Grab 1).
7. Load this configuration to your modem.



Screen Grab 1

Send the numeric message:

1. Connect the VT-MODEM-2 to a phone line.
2. Energize the 'From PLC' discrete input on the VT-MODEM-2 by applying 10-30VDC.
3. After the modem calls you should receive the numeric message as a text message.